

User Manual.



leafgeo-pin

FOR USE WITH LEAF PINPOINT

Getting Started

Getting started with the Leaf Geo-pin™ will require the following:

- Leaf Geo-pin™
- USB to mini-USB cable (supplied)
- Wall or car charger (both supplied)
- Activated SIM card (not supplied, PIN must be blank)
- Personal Computer (not supplied)
 - Operating Systems: Windows 2000, XP or Vista
 - USB port
- Leaf Geo-pin™ configuration software (included)
or Leaf Pinpoint™ Desktop (includes Leaf Geo-pin™ configuration)
- Leaf Geo-pin™ USB drivers (installed by the configuration software)

Follow the instruction in the Getting Started guide to get your Leaf Geo-pin™ up and running.

Indicators

LED Indicators



There are four Light Emitting Diodes (LEDs) used to provide status information. The LED functions are described below.

CALL (*Yellow*):

On (Solid)	In a call
Blink every 1 second	Registering
Short blink every 2 seconds	Missed call

ON (*Yellow*):

On (Solid)	Geo-pin is active and on external power
Blink every 10 seconds	Geo-pin is active and on battery power
OFF	Geo-pin is in hibernation mode

GPS (Yellow):

Blink every 2 seconds	GPS position is locked in
OFF	GPS position not determined

BAT (Red):

Connected to external power:

Blink every 2 seconds	Charging
OFF	Charged

On battery power and active:

Blink every 10 seconds	Low battery (between 20% and 5%)
OFF	Battery critically low

When the Geo-pin is in **Hibernation Mode** all the indicators will be off, except the battery indicator (BAT), which will blink slowly when the battery is low (between 5% and 20%). When the battery is critically low (less than 5%) or empty, all the lights will be off.

Beeps

When the Geo-fence button is pressed, the Geo-pin will beep:

3 Beeps: The geo-fence was set successfully

1 Beep: The geo-fence could not be set, either due to no GPS fix or the geo-fence details could not be sent to the server.

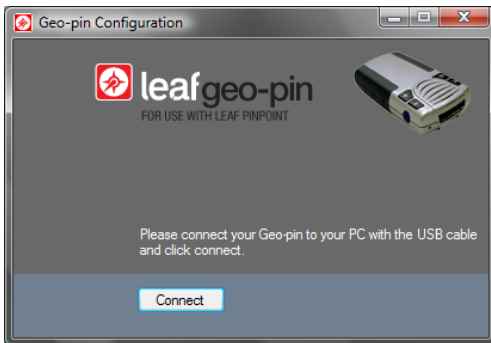
Installing the Drivers

The first time you open Geo-pin configuration, your computer will ask your permission to install 4 (four) drivers. You must install these drivers to enable your computer to communicate with the Geo-pin.

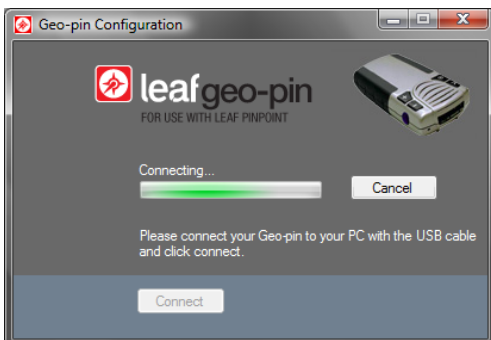
If your computer is running Windows Vista, you will need to grant permission for each driver (i.e. four times). This is not an error, but a security feature on your computer.

Login

Start your standalone configuration software by clicking its icon in your "Start" Menu. You can also use the Geo-pin configuration option in the "File" menu in Leaf Pinpoint™ Desktop.



You will be promoted to connect the device. Connect the Geo-Pin to the computer using the USB port and then click on the CONNECT button. Pinpoint will then display a dialogue bar as it polls and queries the device.



You can cancel the connection by clicking on the CANCEL button.

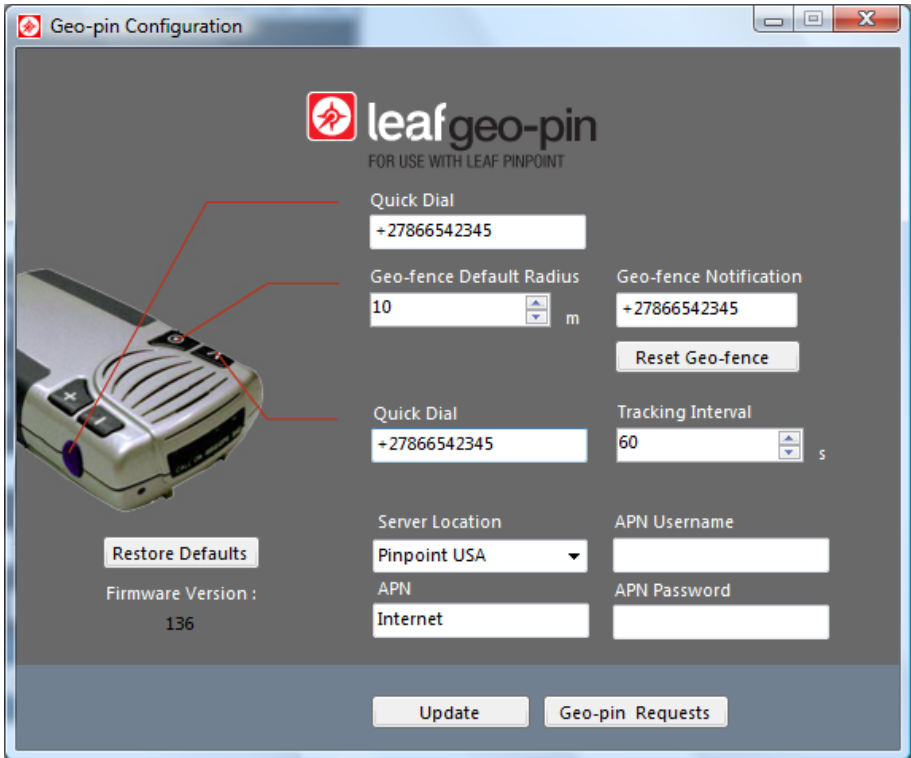
When a successful connection is made, and the PC can identify the device, a Pinpoint Login Dialogue (Called 'Authentication' here) is displayed. The dialogue displays the device IMEI as detected and the pass-code entry box. You can cancel the Login at this stage by clicking on the CANCEL button.



Type your Pass Code that supplied with your Geo-pin and click the "Login" button. The Pass Code is not case sensitive.

You will be taken to the Geo-Pin Configuration screen.

Geo-pin Configuration



The Geo-pin Configuration screen allows you to change the settings on your Geo-pin. The basic configuration options are via text input and each one is written to the device by clicking on the UPDATE button at the bottom left of the interface.

All settings can be reset to the Leaf default settings by clicking the “Restore Defaults” button.

The available configuration settings are :

1. Quick Dial 1. This is an auto dial function for the circular button on the side of the device. The Geo-pin can use this number to make a voice call. Leaf Geo-Pin devices are distributed with the Leaf Call Center pre-programmed and this number can be later restored by clicking the “Restore Defaults” button.
2. Geo-fence default radius. This setting is the default radius for any newly created Geo-fences and is set in meters only. A Geo-fence is a zone that will trigger the sending of a pre-written alert SMS to pre-determined contact numbers when the tracked object enters or leaves the zone. The default for this

number is 200m. The largest Geo-fence that can be entered is 100km. (Being 100 000 meters.)

For total control you can purchase a copy of Leaf Pinpoint™ Desktop. Besides tracking multiple users and extensive searching and routing capabilities, it also contains extensive map-based management of Geo-fences and the ability to manage multiple Geo-fence notification numbers.

3. Geo-fence Notification: This is the mobile number that the notification message will be sent to when the Geo-pin enters or leaves a Geo-fence activated by pressing the Geo-fence button. To stop notifications, you can clear all by clicking the "Reset Geo-fence" button. This will clear the Geo-fence set from the Geo-pin. Any other Geo-fences set with Geo-fence management in Leaf Pinpoint™ Desktop will stay intact.
4. Quick Dial 2. This is an auto dial function for the left arrow marked button on the top of the device. The Geo-pin can use this number to make a voice call. Leaf Geo-Pin devices are distributed with the Quick Dial setting 2 blank.
5. Tracking Interval in seconds. The Leaf Geo-Pin™ will transmit its position to the server at this interval. The default value for this setting is 300 seconds.
6. Server Location. The Pinpoint server that the position updates will be sent to.
7. APN (Access Point Name): This is a setting provided by your mobile service provider. It is the name of the access point that connects your device to the internet. The global default is for this setting is "internet". Please contact your service provider for settings if this does not work.
8. APN User Name and Password: Some access points require a user name and password, but typically these are blank. Please contact your service provider for settings if this does not work.
9. Restore Defaults. This button resets all the settings on this entire control panel back to their default values.

You can manage tracking requests by clicking the "Geo-pin Requests" button.

Manage Tracking Requests



When a Leaf Pinpoint™ user wishes to track your position, and you did not give them your Pass Code, they will send you a tracking request. This request will then appear in your list with a “Pending” status.

You will need to accept their request before they can view your position.

Select the relevant request in the list by clicking on it.

Once it is selected, click on “Accept” to accept the tracking request, or “Block” to deny it.

Close the form by clicking the cross in the top right-hand corner to close this screen and return to the configuration screen.

Terms and conditions of use

For the latest version of these terms go to www.leafpinpoint.net

IMPORTANT NOTICE: THIS PRODUCT MAY RESULT IN YOUR PRIVACY BEING BREACHED BY A THIRD PARTY IF YOU DO NOT KEEP YOUR PASSWORD/CODE AND/OR PRODUCT IMEI CONFIDENTIAL

In call mode, this device should be used as a speaker phone or with a headset. If held up to a person's ear, it may cause harm and/or injury!

The "Product" means the device sold by Leaf from time to time that acts as a tracking device (when used in conjunction with the Leaf Pinpoint™ software application) currently known as a "Leaf Geo-pin". "User" means the person/entity purchasing and subsequently exercising control over the use of the product (in conjunction with the Leaf Pinpoint™ software) as a tracking device. "Control" means the ability to track or disable tracking of the Product using the software intended for use with it. The product is sold to you subject to these Terms and Conditions as amended from time to time. Continued use of the product shall constitute your acceptance of these terms, including the limitations on use, liability and warranty set out herein.

*Also read the terms and conditions of Leaf Pinpoint™ and our full Privacy Policy which can be found at www.leafpinpoint.net or obtained from Leaf directly.

1. USE OF PRODUCT The User of the product acknowledges and agrees that the Product will only function and may only be used in conjunction with the software application known as Leaf Pinpoint™ and that its intended use is solely that of being a tracking device when used in conjunction with the Pinpoint software. When using the product in a different territory than the territory it was bought in from Leaf or its agent(s), the User acknowledges that the Product may not function optimally and/or at all. The User undertakes to make any person the product is handed to for use (other than the buyer of the product) specifically aware that he will be tracked by such a product and in this regard to ensure compliance with the privacy laws particular to the territory the product is used in at the time and further indemnifies Leaf against any and all claims howsoever arising from unlawful use of the product contrary to its intended use.
2. LIMITATION OF LIABILITY Use of the product is entirely at the User's own risk. The User further accepts liability for use of the product by any other entity/person using the product with his knowledge. The product is provided on an "as is" basis and all warranties, guarantees and/or conditions and other

terms implied by statute or common law are, to the fullest extent permitted by law, excluded, excepting the manufacturer's warranty. The product may malfunction when used in conjunction with third party software other than the Pinpoint software for which Leaf shall not be liable in any way. Without limiting the foregoing, Leaf makes no warranty (whether express or implied) that:

- a) the Products will meet the User's requirements,
- b) the Products will be uninterrupted, timely, secure, virus- free or error-free; or will be compatible with other software or applications to be used with or applied to,
- c) the results that may be obtained from the use of the Product will be effective, accurate or reliable,
- d) the quality of the Products will meet the User's expectations and
- e) any errors in any software obtained from or used through the Products, or any defects in the services and Products will be corrected, or that
- f) the information provided will be accurate. In addition, Leaf makes no representations and warranties, express or implied, including the implied warranties of fitness for a particular purpose, merchantability and non-infringements. In no event will Leaf, its suppliers, employees, contractors, affiliated companies and/or affiliated third parties mentioned on Leaf's website from time to time be liable for any loss, injury, death or damages of any kind, including without limitation, direct, indirect, incidental or consequential damages (including, but not limited to, damages for lost profits, incidental, special or consequential damages, business interruption and loss of programmes or information) claims and/or actions arising out of or in connection with the Products and/or use of the Products, due to Leaf, its agents, employees, members, and/or contractor's negligence or otherwise. The User of the Product hereby indemnifies Leaf and holds it harmless against any claim by any user and/or other third party in respect of invasion of privacy or any other claim of whatsoever nature and howsoever arising from the use of the products, including consequential damages. Leaf hereby makes the User aware, that Privacy laws applicable in the Republic of South Africa and any territory the product is used in should be observed when using the Product and the PinPoint application and particularly when providing the product to another person to use. The User in particular indemnifies Leaf for damages and claims arising from a third party obtaining the User's secret username and Pass Code in an unlawful and/or fraudulent and/or manner other than with the explicit consent of the tracked User and/or tracking a User without his knowledge and consent.

3. USE OF INFORMATION AND MATERIALS No material and/or information contained in the Product and/or the Product itself may be copied, reverse-engineered, reproduced, republished, uploaded or distributed in any way

except that you may download the material for personal non-commercial use as intended. Modification of the material and/or the Product shall constitute a violation of Leaf and any third party copyright holder's copyright and proprietary rights in the Product. Public presentation or broadcasting and/or any other distribution of the Product is strictly prohibited.

4. NO IMPROPER USE OR UNLAWFUL CONDUCT The User hereby agrees not to use the Product for any purpose that is unlawful, improper or prohibited by these terms and conditions and to ensure that no other person or entity using the product does so in last mentioned ways. Improper actions include, but are not limited to: activities designed to defame, embarrass, harm, abuse, threaten, slander or harass Leaf and/or any third parties, invade a third party's privacy by obtaining another User's Username and Pass Code in an unlawful manner and without their consent and/or any activities prohibited by the laws of the Republic of South Africa and/or any foreign territories in which the User uses the product or conducts business; activities designed to encourage unlawful behaviour by others and activities constituting invasion of privacy and will at all times act in a manner required by the prevailing laws of the territory when using information obtained through use of the Product. The User understands that, the Username and Pass Code it is prompted to provide on installation and first start up of the product should be kept in a safe place and secret to avoid third party users tracking the user without his consent. In the event that an employer wishes to use the product to track employees and/or goods in transit, it acknowledges and agrees to observe the prevailing labour laws of the territory and/or foreign territories when doing so which may require obtaining the employee's written consent to do so.
5. MODIFICATION Leaf reserves the right to modify and amend these terms and conditions without notice to the User and it remains the user's obligation to check our website regularly for the updated version.
6. PRIVACY Every individual and entity's (tracked User) right to privacy is of paramount importance to Leaf. Any information provided by the User to Leaf and saved on Leaf's database will not be shared with any third party, unless Leaf obtains the User's prior permission to do so or is required to do so by law. All location information shall be kept on our database for a maximum period of 12 months unless requested to keep longer by the User in writing by entering into a separate agreement, where after it shall be permanently deleted. Leaf shall however be under no obligation to keep such data, nor shall it take any responsibility or be liable for any damages caused of whatever nature and

howsoever arising by it not keeping such information for the afore mentioned period. During this period, this information shall not be disclosed to any third party unless Leaf is required by law to do so. Any request by a User to disclose this information shall be granted on a case by case basis at Leaf's sole discretion and may incur a fee to cover any administration fees. Please see our full Privacy Policy at www.leafpinpoint.net.

7. GENERAL This agreement constitutes the entire agreement between the parties. In the event of the invalidity of any part or portion of this agreement for any reason whatsoever, such invalidity shall not affect the validity or enforceability of any other part or provision of this agreement and such invalid part or portion shall be deemed to have been struck out of the agreement. No waiver by Leaf in respect of the User's actions or omissions with regard to any breach, failure or default in performance by the User, and no failure, refusal or neglect by Leaf to exercise any right hereunder or to insist upon strict compliance with or performance of the User's obligations under this agreement, shall constitute a waiver of the provisions of this agreement and Leaf may at any time require strict compliance with the provisions hereof.
8. GOVERNING LAW AND JURISDICTION These terms and conditions will be governed by and construed in accordance with the laws in force in the Republic of South Africa.
9. DISPUTE & BREACH All disputes arising out of or relating to this Agreement including disputes as to the meaning or interpretation of any provision of this Agreement, shall first be resolved or attempted to be resolved by the Parties through bona fide discussion within 30 (Thirty) days of such dispute having been declared by any of the parties. Subject to the above being exhausted, any dispute will be referred to an arbitrator of Leaf's choice being a Senior Counsel of the Bar Council of Johannesburg. Any award made by the arbitrator:-will be capable of being taken on appeal to the High Court of South Africa with the appropriate jurisdiction. The sub-clauses aforestated of this clause will not preclude either party from obtaining intermediate relief on an urgent basis from a court of competent jurisdiction, pending the decision of the arbitrator. Leaf reserves the right to terminate and withdraw this license at any time without notice to the User.
10. INTELLECTUAL PROPERTY RIGHTS "Intellectual Property Rights" means and shall include without limitation, copyright, trademarks, service marks, trade names, domain names, design rights, patents, petty patents, utility models and like rights, in each case whether registered or unregistered and including applications for the grant of any of the foregoing, rights in know-how, confidential information, designs, trade secrets, other intellectual property rights and all rights or forms of protection having equivalent or similar effect to any of the foregoing. The User acknowledges that any and all of the Intellectual Property Rights used or embodied in or in connection with the Products are and will remain the sole property of Leaf and/or any third party

supplier of Leaf as the case may be. The User shall not question or dispute the ownership of such rights at any time during the time the agreement remains in force, or thereafter. In addition, the User acknowledges that it is not authorized to use, amend or exploit any of the intellectual property rights, including the trade marks in any manner whatsoever, without the prior written consent of Leaf.