

Getting Started.

Contents.

In the box

Install

Activate

Register

View

Search

Add a Friend

Route

Terms and Conditions of use





In the box.

The Leaf Pinpoint™ Desktop box contains the following:

- a. **Getting Started guide:** This guide will help you to get Leaf Pinpoint™ Desktop up and running. For more detailed instructions, please refer to the electronic User Manual contained on the installation CD.
- b. **Installation CD:** The installation CD contains a setup file that can be run from your computer. It also contains electronic versions of the Getting Started guide and the User Manual.
- c. **Software Activation Key:** The key that is included with the original Leaf Pinpoint™ Desktop packaging is printed inside the cover of the Getting Started guide.



NOTE:

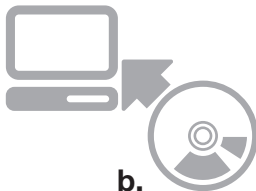
Please keep this key safe, as you will need it to activate the software on first use and if you need to re-install the software.
If you lose this key, you will need to repurchase the software.



Install.

Installing Leaf Pinpoint™ Desktop from the included CD:

1. Insert the CD into your PC's CD/DVD drive.
2. Click "Install Leaf Pinpoint Desktop" on the menu that appears and follow the on-screen instructions.

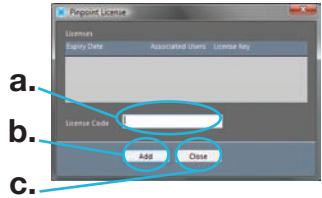




Activate.

You will need to activate the software before you can use it. An active internet connection is required for activation and use of this software.

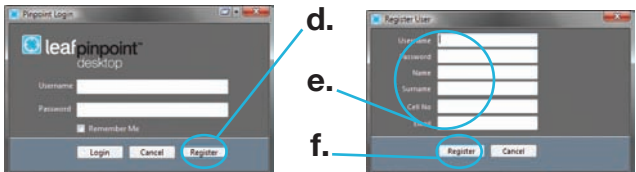
1. Start Leaf Pinpoint™ Desktop by double-clicking the Pinpoint icon on your desktop or clicking its icon in your Start menu (in Programs\Leaf).
2. Accept the Terms of Use by tapping “I Agree” when they are displayed.
3. On the Pinpoint License screen, enter the software activation key (printed on the original materials supplied with this software) in the space provided [a.] and click “Add” [b.] Once your key has been validated over the internet, click “Close” [c.] to continue to the next step.



Register.

You will also need to register your user name and password to log in. An active internet connection is required for registration and use of this software.

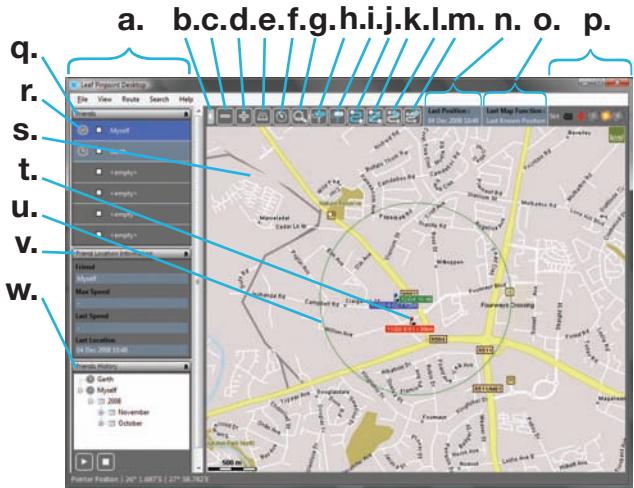
1. Click the “Register” button [d.] on the Login screen to create your user account.
2. Carefully select a unique User name and a Password and complete all the other fields [e.]. Click “Register” [f.] to continue.





View

The Leaf Pinpoint™ Desktop Home Screen contains the following elements:



The map. [s.] The positions of a friend or friends* that you are viewing (shaded blue [r.]) are shown on the map. These positions can be one of two types:

GPS Position [t.]

Cell Tower Position [u.]

The map is also used to display historical positions.

To **zoom** in and out, use the + and - buttons on the toolbar [d./c.], or the scroll wheel on your mouse. You can right-click and drag the map to pan.

The Side Bar [a.] contains panels used to control the map and to display extra information about the locations on the map.

These are:

A list of your Pinpoint Friends. [q.] Click a friend's name to view their last positions. Right-click for more options. You can use the check boxes next to your friend's names to view more than one friend simultaneously*.

Friends Location information. [v.] This panel displays information about the last/current position displayed on the map.



History Selector. [w.] You can drill down to a specific day by clicking the plus signs, and then click on a specific day to view all positions reported on that day for a specific friend. You can then specify a time window to narrow down your selection even further. Click the “play” button to animate the history for that day.

The Status Bar contains the following items:

[b.] Shows/Hides the Side Bar	[a.]	[i.] Opens the Address search dialogue to search for and set the destination of a route
[c.] Zoom Out		[j.] Calculates a route between the start and destination
[d.] Zoom In		[k.] Cancels a calculated route
[e.] Toggles 2D/3D map view	[f.]	[l.] Starts/Stops a 3D route preview
[f.] Shows/Hides date, time and speed information at each position on the map.		[m.] Export the calculated route
[g.] Opens the Smart search dialogue	[h.]	[n.] Last Position
[h.] Opens the Address search dialogue to search for and set the start of the route		[o.] Last Map Function
		[p.] Status Indicators

Update Interval: This is the current interval at which the device being viewed is sending position updates to the server, or the reason for the update. The reason can be one of the following:

OFF: this indicates that tracking has been switched off.

Strt: Position was sent on startup

Snd: Position was sent with “Send Now” button

Pwr: Position was sent when connecting to external power

Bat: Position was sent when the power state changed to battery or the battery level dropped below 50%.

Power State: This indicates the power state of the device being viewed. A familiar and self evident icon indicates one of the following states:

- on **external power**,
- **battery normal** or **battery low**.

When viewing a friend with a Geo-pin, this indicator is not shown.

Position Reliability:

Green indicates that the latest position is a valid and recent GPS position.

Yellow means that the latest position is approximate due to the latest Cell Tower position being used instead of GPS. If there is no recent position, the **Red** indicator is lit.

* For details about friends, refer to “Add a Friend” in this guide and the Getting Started guides of Leaf Geo-pin™ and Leaf Pinpoint™ Tracker.



Search.

There are two search methods in Leaf Pinpoint™ Desktop that can be used to find a location: to specify a start or destination for a route, or to save a favourite.

Search

Smart Search | Address Search

Country: United States

City: New York

Suburb:

Street: Central

Search

Results:

- Central Ave, Brooklyn
- Central Ave, Staten Island
- Central Park, New York

Select | Cancel

Search

Smart Search | Address Search

Country: France

Free Text: Notre

Search

Results:

- Notre-Dame-D'Or
- Notre-Dame-D'Or
- Notre-Dame

Select | Cancel

Address Search

1. Select a country from the list
2. Type in as much detail as you have in the City, Suburb and Street fields.
3. Click “Search”
4. Click the desired result from the list of results displayed.
5. Click “Select”

Smart Search

1. Select a country from the list
2. Type what you are searching for in the Free Text Box
3. Click “Search”
4. Click the desired result from in the list of results displayed.
5. Click “Select”

NOTE:

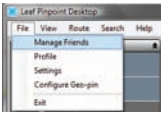
You can widen or narrow your search by adjusting the amount of detail supplied in the search terms.



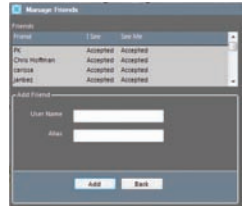
Add a Friend.

Before you can assign friends to slots in your Friends List and view their position, **you need their permission to do so.**

1. Select “Manage Friends” from the “File” menu.

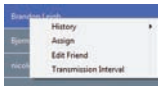


2. Type their User Name and an optional Alias in the Add Friends section and click “Add”.
3. Wait for them to accept your invitation.

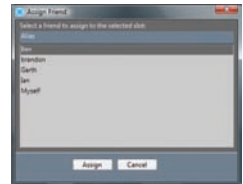


Assign the Friend to a slot in the Friend List

1. Right-click the empty slot and click “Assign”.



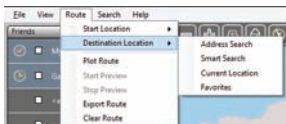
2. Select the friend from the list.
3. Click “Assign”.



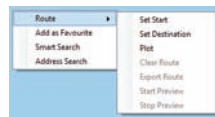
Route.

Plotting a route in Pinpoint is a very simple process;

1. Specify a Start location
2. Specify a Destination location
3. Plot the route



Routing Menu



Right-click Menu

Once a route has been plotted you can preview the route or e-mail the route to anyone else.

TERMS AND CONDITIONS OF USE: LEAF PINPOINT (abridged version, full version on enclosed CD). **Latest version can be viewed at www.leafpinpoint.net or obtained from Leaf directly. Usage of the products shall constitute your acceptance of these terms, including the limitations on use, liability and warranty.** "Territory" means any Territory the product is being used in. **1. LICENSE** By using the Product(s) you are entering into a limited non-exclusive license agreement to use the Product on the terms and conditions (referred to above). Continued usage shall constitute acceptance to be bound to such terms and conditions as amended from time to time. **If you do not agree, or wish to be bound by the terms and conditions, IMMEDIATELY DISCONTINUE USE.** This License does not grant any rights to obtain future upgrades, updates or supplements of the Software. Pinpoint mobile is a single user license that allows you to view the position of up to 6 other users (one at a time, activation on 1 mobile device only). Pinpoint Desktop allows the licensee to view the position of up to 2 assets and/or other users ("Pinpoint Friends") simultaneously. Viewing of each additional asset will require an additional license and license fee. **2. USE OF PRODUCT** The User may only use the Software for personal use, internal business use, and not for resale and/or commercial purposes, not to sub-license, assign, transfer or otherwise convey the Software to any third party. The User acknowledges and agrees that he will incur a cost to download information and/or data in the course of using the Product, in accordance with the prevailing rates of his particular Mobile Service Provider to download data and agrees that the Product will only function when installed on a device with built-in GPS capability and that a separate device may need to be acquired by either the User wishing to view the position of another User (tracking User) and/or the User whose position is being viewed (tracked User) such as a Geo-Pin and/or bluetooth receiver device. When using the Product to view another User's position in a different territory the User acknowledges that he may have to activate roaming services with his Cellular Service Provider at an additional cost as determined by its Cellular Service Provider and/or that the Product shall not function if such services are not available in that particular territory (and similar for a "tracking User" in a different Territory. When using Pinpoint Desktop, the User shall fully insure the asset being viewed and this application should not be seen as a replacement for insurance in any way. **3. LIMITATION OF LIABILITY** Use of the product is entirely at the User's own risk. The User assumes all risk for loss or damage to the monitored asset and/or contents and/or components and for personal injury to persons occupying or affected by his/her monitored asset. Leaf shall use its best endeavours to ensure the accuracy of the material, maps and information that constitutes the products, (of which some are sourced from third party suppliers) however it is provided on an "as is" basis and all warranties, guarantees and/or conditions and other terms implied by statute or common law are, to the fullest extent permitted by law, excluded. Third party material, official copyright notices and specific license conditions may be found via <http://www.leafpinpoint.net>. Without limiting the foregoing, Leaf makes no warranty that the Products will (a) meet the User's requirements, (b) be uninterrupted, timely, secure, virus-free or error-free; or will be compatible with other software or applications to be used with or applied to, (c) provide results that will be effective, accurate or reliable, (d) provide results and be of a quality that meets the User's expectations and (e) not have any errors in any software obtained from or used through the Products, or any defects in the services and Products will be corrected, or (f) provide information that is accurate. Leaf makes no warranty of fitness for a particular purpose, merchantability and non-infringements. Leaf shall not be liable for the activation, interruption, operation or non-operation of the Products, the cellular network, the Global Positioning Satellite (GPS); telephone transmission wires, the Device or other potential mediums since Leaf has no control of, or supervision over, any such equipment. In no event will Leaf, its suppliers, employees, contractors, affiliated companies and/or affiliated third parties mentioned on Leaf's website from time to time be liable for any loss, injury, death or damages of any kind, including without limitation, direct, indirect, incidental, punitive or consequential damages (including, but not limited to, damages for lost profits, incidental, special or consequential damages, business interruption and loss of programmes or information) claims and/or actions arising out of or in connection with the Products and/or use of the Products, performance or use of the software with other software any subsequent modifications, updates or enhancements to the Products including its maps, regardless of whether or not the negligence of Leaf caused or contributed to the said loss, injury, death or damages. The User of the products and particularly the Pinpoint Mobile Product hereby indemnifies Leaf and holds it harmless against any claim by a third party in respect of invasion of privacy or any other claim of whatsoever nature and howsoever arising from the use of the products, including consequential damages. Leaf hereby makes the User aware, that Privacy laws applicable in the Republic of South Africa and Foreign Territories should be observed when using the Product. The User in particular indemnifies Leaf for damages and claims arising from the User obtaining another User's (tracked User) secret username and Password and/or Pass Code in an unlawful and/or fraudulent and/or manner other than with the explicit consent of the tracked User and/or the User not keeping his username and password and/or passcode secret and confidential. This clause shall survive the termination or expiration of this agreement for any reason whatsoever. **4.PRIVACY** Every individual and entity's (tracked User) right to privacy is of paramount importance to Leaf. Any information provided by the User to Leaf and saved on Leaf's database will not be shared with any third party, unless Leaf obtains the User's prior permission to do so or is required to do so by law. All location information shall be kept on our database for a minimum period of one month, and a maximum period of 12 months, whereafter it shall be permanently deleted. Leaf shall however be under no obligation to keep such data, nor shall it take any responsibility or be liable for any damages caused of whatever nature and howsoever arising by it not keeping such information for the aforementioned period. During this period, this information shall not be disclosed to any third party unless Leaf is required by law to do so. Any request by a User to disclose this information shall be granted on a case by case basis at Leaf's sole discretion and may incur a fee to cover any administration fees. View Leaf's full Privacy Policy at www.leafpinpoint.net or obtain same directly from Leaf. These terms and conditions will be governed by and construed in accordance with the laws in force in the Republic of South Africa.