

Getting Started.



Contents.

In the box

Install

Register

Activate

Position

Viewing





Map

Terms and Conditions of use



In the box.

The Leaf Pinpoint™ Mobile box contains the following:

- a. 
- b. 
- c. 
- d. 

a. Getting Started guide: This guide will help you to get Leaf Pinpoint™ Mobile up and running. For more detailed instructions, please refer to the electronic user manual contained on both the installation CD and SD card.

b. Installation CD: The installation CD contains a setup file that can be run from your computer. It also contains electronic versions of the getting started guide, user manual and the Terms and Conditions.

c. Installation SD Card: The Installation SD Card contains a setup file that can be run from your phone. It also contains electronic versions of the getting started guide and the user manual.

d. Software Activation Key: The key that is included with the original Leaf Pinpoint™ Mobile packaging is printed inside the cover of the Getting Started guide.

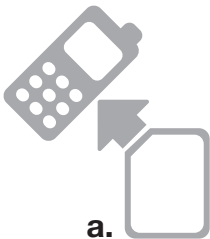
NOTE:

Please keep this key safe, as you will need it to activate the software on first use and if you need to re-install the software.

If you lose this key, you will need to repurchase the software.



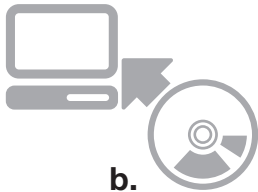
Install.



a. From SD Card

If your phone has an SD slot, you can install Leaf Pinpoint™ Mobile straight from the included SD Card using your phone only.

1. Insert the SD card into the slot.
2. Follow the on-screen instructions.



b. From CD

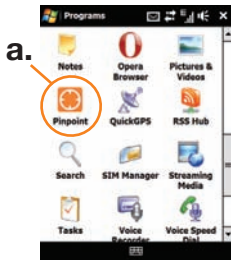
Installing Leaf Pinpoint™ Mobile from the included CD:

1. Connect your phone to your PC using your USB sync cable.
2. Establish a sync connection (using Microsoft ActiveSync on Windows XP™ or Windows Mobile Device Center on Windows Vista™).
3. Insert the CD into your PC's CD/DVD drive.
4. Click "Install Leaf Pinpoint Mobile" on the menu that appears and follow the on-screen instructions.

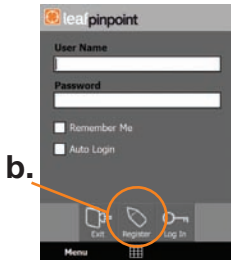


Register.

An active internet connection is required for registration, activation and use of this software.



1. Start Leaf Pinpoint™ by tapping its icon [a.] in your list of Programs (Tap “Start” then “Programs” or use the “All Programs” list in TouchFLO™ 3D).
2. Read and accept the Terms and Conditions and tap “Proceed”.
3. Tap the “Register” button [b.] on the Login screen to create your user account.
4. Carefully select a unique User Name and a Password, complete all the other fields and tap “Register” to continue.



NOTE:

Your User Name cannot be changed later and will be the name that other people use to track you. Make sure that the password you choose is easy to remember, but difficult to guess. Your password must be between 5 to 10 characters long and can contain letters and numbers (at least one), but no special characters.



Activate.

You will need to activate the software before you can use it to view your friends.

NOTE:

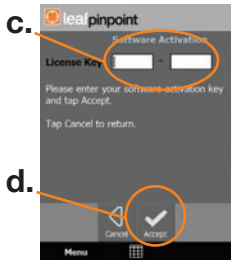
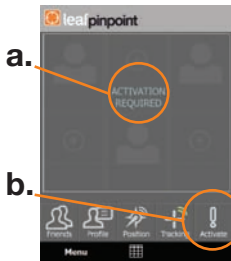
If you do not activate Leaf Pinpoint™, you will only be able to use it for positioning and not for viewing the positions of friends.

1. On the home screen, when “Activation Required” [a.] is displayed, tap the “Activate” button [b.].
2. On the Software Activation screen, enter the Software Activation Key (printed on the original materials supplied with this software) in the space provided [c.] and tap the “Accept” button [d.].

NOTE:

Once the key is entered, the license will be associated with the device (not the user) and be valid for the lifetime of that specific device.

3. Restart Leaf Pinpoint™ Mobile to finalise the software activation process.





Position.

You can use Leaf Pinpoint™ to turn your phone into a positioning beacon.

NOTE:

You can use Leaf Pinpoint™ as a beacon on as many phones as you like. You do not need to activate Pinpoint to do this.

a.

b.



1. On the home screen, tap the “Track/Tracking” button [a.] to switch positioning on and off.

2. To view or change your position and GPS status and settings, you can tap the “Position” button [b.] on the Home Screen.

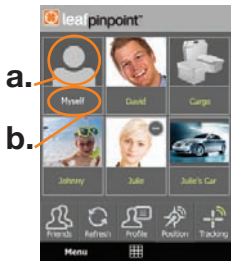
NOTE:

Please refer to the User Manual or Help in the application menu for detailed information regarding settings and statuses for positioning via GPS and cell towers.



Viewing.

To help get you up and running as soon as possible, when you register, Leaf Pinpoint™ Mobile adds your own name to your list of friends and assigns you to your first empty slot in the home screen grid.



1. Tap your icon in the grid [a.] and you will go to the map to view your position.
2. If you tap on your name [b.] instead of your icon, you will be able to edit your details.

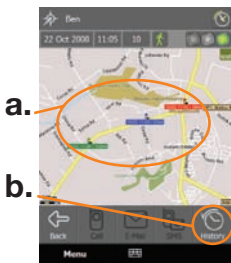
NOTE:

You can add more friends and view their photos in the grid by associating them with your Microsoft Outlook® contacts. Please refer to help or the user manual for more details.

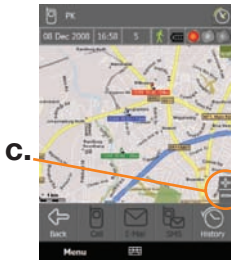


Map.

Freedom to find your friends on the map.



1. The pins on the map [a.] indicate recently reported positions.
2. For older positions, tap the “History” button [b.].
3. If you have a TouchFLO™ capable device, you can use TouchFLO™ to navigate the map. Simply draw a circle to zoom (clockwise for zooming in and anti-clockwise for zooming out) or just “pull” the map in any direction with your finger or stylus. On other devices, use the Zoom In (+) and Zoom Out (-) buttons [c.], and tap and drag the map to pan.



4. To view or change your position and GPS status and settings, you can tap the “Position” button on the home screen.

NOTE:

Please refer to the user manual or Help in the application menu for detailed information regarding all the icons and buttons on this screen.

TERMS AND CONDITIONS OF USE: LEAF PINPOINT (abridged version, full version on enclosed CD). **Latest version can be viewed at www.leafpinpoint.net or obtained from Leaf directly. Usage of the products shall constitute your acceptance of these terms, including the limitations on use, liability and warranty.** "Territory" means any Territory the product is being used in. **1. LICENSE** By using the Product(s) you are entering into a limited non-exclusive license agreement to use the Product on the terms and conditions (referred to above). Continued usage shall constitute acceptance to be bound to such terms and conditions as amended from time to time. **If you do not agree, or wish to be bound by the terms and conditions, IMMEDIATELY DISCONTINUE USE.** This License does not grant any rights to obtain future upgrades, updates or supplements of the Software. Pinpoint mobile is a single user license that allows you to view the position of up to 6 other users (one at a time, activation on 1 mobile device only). Pinpoint Desktop allows the licensee to view the position of up to 2 assets and/or other users ("Pinpoint Friends") simultaneously. Viewing of each additional asset will require an additional license and license fee. **2. USE OF PRODUCT** The User may only use the Software for personal use, internal business use, and not for resale and/or commercial purposes, not to sub-license, assign, transfer or otherwise convey the Software to any third party. The User acknowledges and agrees that he will incur a cost to download information and/or data in the course of using the Product, in accordance with the prevailing rates of his particular Mobile Service Provider to download data and agrees that the Product will only function when installed on a device with built-in GPS capability and that a separate device may need to be acquired by either the User wishing to view the position of another User (tracking User) and/or the User whose position is being viewed (tracked User) such as a Geo-Pin and/or bluetooth receiver device. When using the Product to view another User's position in a different territory the User acknowledges that he may have to activate roaming services with his Cellular Service Provider at an additional cost as determined by its Cellular Service Provider and/or that the Product shall not function if such services are not available in that particular territory (and similar for a "tracking User" in a different Territory. When using Pinpoint Desktop, the User shall fully insure the asset being viewed and this application should not be seen as a replacement for insurance in any way. **3. LIMITATION OF LIABILITY** Use of the product is entirely at the User's own risk. The User assumes all risk for loss or damage to the monitored asset and/or contents and/or components and for personal injury to persons occupying or affected by his/her monitored asset. Leaf shall use its best endeavours to ensure the accuracy of the material, maps and information that constitutes the products, (of which some are sourced from third party suppliers) however it is provided on an "as is" basis and all warranties, guarantees and/or conditions and other terms implied by statute or common law are, to the fullest extent permitted by law, excluded. Third party material, official copyright notices and specific license conditions may be found via <http://www.leafpinpoint.net>. Without limiting the foregoing, Leaf makes no warranty that the Products will (a) meet the User's requirements, (b) be uninterrupted, timely, secure, virus- free or error-free; or will be compatible with other software or applications to be used with or applied to, (c) provide results that will be effective, accurate or reliable, (d) provide results and be of a quality that meets the User's expectations and (e) not have any errors in any software obtained from or used through the Products, or any defects in the services and Products will be corrected, or (f) provide information that is accurate. Leaf makes no warranty of fitness for a particular purpose, merchantability and non-infringements. Leaf shall not be liable for the activation, interruption, operation or non-operation of the Products, the cellular network, the Global Positioning Satellite (GPS);

telephone transmission wires, the Device or other potential mediums since Leaf has no control of, or supervision over, any such equipment. In no event will Leaf, its suppliers, employees, contractors, affiliated companies and/or affiliated third parties mentioned on Leaf's website from time to time be liable for any loss, injury, death or damages of any kind, including without limitation, direct, indirect, incidental, punitive or consequential damages (including, but not limited to, damages for lost profits, incidental, special or consequential damages, business interruption and loss of programmes or information) claims and/or actions arising out of or in connection with the Products and/or use of the Products, performance or use of the software with other software any subsequent modifications, updates or enhancements to the Products including its maps, regardless of whether or not the negligence of Leaf caused or contributed to the said loss, injury, death or damages. The User of the products and particularly the Pinpoint Mobile Product hereby indemnifies Leaf and holds it harmless against any claim by a third party in respect of invasion of privacy or any other claim of whatsoever nature and howsoever arising from the use of the products, including consequential damages. Leaf hereby makes the User aware, that Privacy laws applicable in the Republic of South Africa and Foreign Territories should be observed when using the Product. The User in particular indemnifies Leaf for damages and claims arising from the User obtaining another User's (tracked User) secret username and Password and/or Pass Code in an unlawful and/or fraudulent and/or manner other than with the explicit consent of the tracked User and/or the User not keeping his username and password and/or passcode secret and confidential. This clause shall survive the termination or expiration of this agreement for any reason whatsoever. **4.PRIVACY** Every individual and entity's (tracked User) right to privacy is of paramount importance to Leaf. Any information provided by the User to Leaf and saved on Leaf's database will not be shared with any third party, unless Leaf obtains the User's prior permission to do so or is required to do so by law. All location information shall be kept on our database for a minimum period of one month, and a maximum period of 12 months, whereafter it shall be permanently deleted. Leaf shall however be under no obligation to keep such data, nor shall it take any responsibility or be liable for any damages caused of whatever nature and howsoever arising by it not keeping such information for the aforementioned period. During this period, this information shall not be disclosed to any third party unless Leaf is required by law to do so. Any request by a User to disclose this information shall be granted on a case by case basis at Leaf's sole discretion and may incur a fee to cover any administration fees. View Leaf's full Privacy Policy at www.leafpinpoint.net or obtain same directly from Leaf. These terms and conditions will be governed by and construed in accordance with the laws in force in the Republic of South Africa.