

Getting Started.

Contents.

About

Share

Install

Switch On

Last Position

Position Settings

GPS Status

See Me

Upgrading

Power Saving Tips

Terms and Conditions of use



About.

Leaf Pinpoint™ Tracker is a free application built in to Leaf Pinpoint™ Mobile that does not require a Software Activation Key.

You can use Leaf Pinpoint™ Tracker to turn your phone into a positioning beacon.

To do this, the Leaf Pinpoint™ Tracker service will run in the background on your phone. It will use GPS, when possible, or cell tower location to determine your position and send it to the server at configurable intervals.



Share.

You can give or send the Installation file to a friend so that you can view their position in your copy of Leaf Pinpoint™ Mobile or Desktop.

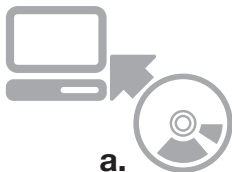
1. Locate the file, "LeafPinpointTracker.zip" on your installation CD in a folder called Leaf Pinpoint™ Tracker, or download it from www.leafpinpoint.net. The compressed folder contains an installation file, a copy of this guide and a ReadMe file with basic instructions.
2. Give or send the file to a friend.

WARNING

IF A PINPOINT USER DOES NOT ACTIVELY TRACK AND/OR VIEW THE DEVICE ON WHICH THE FREE TRACKER SOFTWARE IS INITIALLY INSTALLED, FOR ANY CONTINUOUS PERIOD OF 30 DAYS, LEAF RESERVES THE RIGHT TO DEACTIVATE THE TRACKER SOFTWARE.



Install.



a.

a. From CD

Installing Leaf Pinpoint™ Tracker from the included CD

1. Connect your phone to your PC using your USB sync cable.
2. Establish a sync connection as usual (using Microsoft ActiveSync on Windows XP or Windows Mobile Device Center on Windows Vista).
3. Insert the CD into your PC's CD/DVD drive.
4. **Leaf Pinpoint™ Desktop CD**



Click “Install Leaf Pinpoint™ Tracker” on the menu that appears and follow the on-screen instructions.

Leaf Pinpoint™ Mobile CD



Click “Install Leaf Pinpoint Mobile” on the menu that appears and follow the on-screen instructions.



b.

b. From LeafPinpointTracker.zip

Installing Leaf Pinpoint Tracker from the zip file

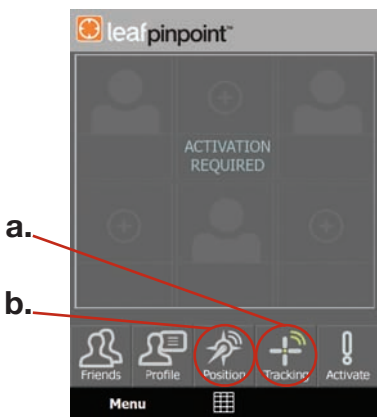
1. Extract the files into a folder on your computer.
2. Connect your phone to your PC using your USB sync cable.
3. Establish a disk drive or sync connection. (A sync connection requires Microsoft ActiveSync on Windows XP or Windows Mobile Device Center on Windows Vista).
4. Locate a file called “LeafPinpointTracker.cab” in the folder that you extracted the zip file to.
5. Copy the file to a folder on your phone. Remember this location.
6. Open “File Explorer” on your phone and locate the folder.
7. Tap “LeafPinpointTracker.cab” to start the installation.
8. Follow the on-screen instructions.



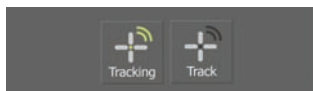
Switch On.

You can turn the Leaf Pinpoint™ Tracker service ON or OFF by tapping the “Track/Tracking” button [a.] on the Home screen. Pinpoint will automatically send your position to the server when you switch either tracking or your phone on or off.

Tapping the “Position” button [b.] will take you to the Last Position screen where you can view details and change settings related to positioning and GPS.



When tracking is on, the button will display the word “Tracking” and the centre of the icon and the ‘signals’ will be green. Tapping the button will turn tracking off, the button will display the word “Track” and the ‘signals’ that were previously green will now be a dark grey. Tap the button again and tracking will be switched on again. The button will return to the previous state and your phone will vibrate briefly.





Last Position.

The Last Position screen displays the details of your last reported position. This information is retrieved from the server every 30 seconds.

To send a new position to the server, tap the “Send Now” button [a.].

Tap the “Settings button” [b.] to go to the Position Settings screen. (Please refer to the Position Settings entry)

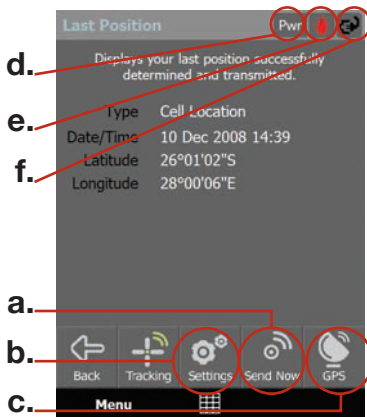
Tap the “GPS” button [c.] to view your GPS status. (Please refer to the GPS Status entry)

The right hand side of the heading bar contains a set of status indicators:

[d.] Update Interval: This is the current interval at which the device being viewed is sending position updates to the server, or the reason for the update. The reason can be one of the following:

- OFF:** this indicates that tracking has been switched off.
- Strt:** Position was sent on startup
- Snd:** Position was sent with “Send Now” button
- Pwr:** Position was sent when connecting to external power
- Bat:** Position was sent when the power state changed to battery, or the battery level dropped below 50%.

[e.] Movement: A red hand means that the device is stationary and the walking green man means that it is moving.



[f.] Power State: This indicates the power state of the device being viewed. An icon indicates one of the following states: on external power, battery normal or battery low. When viewing a friend with a Leaf Geo-pin™, this indicator is not shown.



Position Settings.

Position Settings determine how often Pinpoint sends your position to the server in various power states and also whether or not Pinpoint should manage your phone's power state.

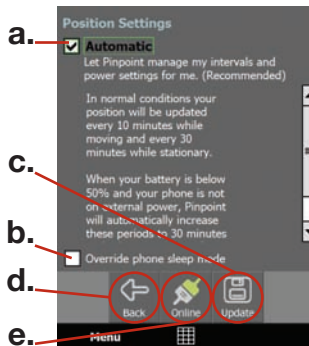
At the top of the screen there is a check box set to Automatic [a.]. This allows Pinpoint to automatically determine how often to send updates to the server. [b.]. When "Override phone sleep mode" is checked, this will prevent it from going to sleep.

If you uncheck Automatic, the Manual settings will appear.

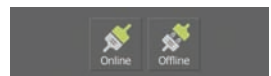
After you have adjusted your settings, tap "Update" [c.] to save your settings. Tap "Back" [d.] to return to the Last Position screen.

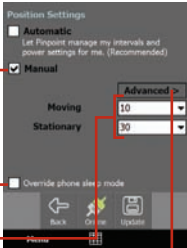
Leaf Pinpoint™ Tracker usually operates in Online mode and sends positions to the server as soon as it records them. This is indicated by the "Online" button [e.]. When your phone cannot connect, in areas of weak reception or while in flight mode, it will save the positions locally and send it to the server when it can connect again. By tapping the "Online" button, you can manually set the phone to Offline. The button will then change to "Offline". The two versions of this button are shown at [f.]. You can switch to offline mode when you do not want to send your positions as they are recorded.

This could be due to sub-optimal data connectivity, to save on data costs, or to conserve battery power. When you are ready to transmit all the recorded positions (in a better data reception area, on external power, or when you are connected to WiFi), switch back to Online mode. Your recorded positions will then be sent to the server.



f.





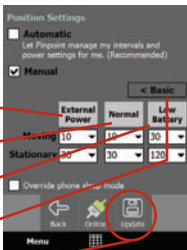
Basic Position Settings

If Manual [a.] is checked, you can set your own update intervals. Uncheck it to reset your settings to Automatic.

When your phone goes into deep sleep, it may not wake up to send an update. Check “Override phone sleep mode” [b.] to prevent this. Because this may adversely affect battery performance, only check this option when it is imperative that updates are sent continuously. It is recommended that you use external power (e.g. a car charger) while this setting is on.

You can manually set the time intervals (in minutes) at which Pinpoint Tracker sends your position to the server [c.]. In this example Pinpoint Tracker will send updates every 10 minutes while stationary and every 30 minutes while you are moving.

To go to the advanced settings, tap the “Advanced” button [d.].



Advanced Position Settings

Advanced position settings allows you to set the update intervals when stationary and moving for each of three different states.

[a.] **External Power:** These settings apply when your phone is connected to an external power source, like a wall charger, car charger or computer.

[b.] **Normal:** These settings apply when your phone is on battery power and there is at least half of your battery power left.

[c.] **Low Battery:** These settings apply when your phone is on battery power and there is less than 50% battery power left.

To return to the basic settings, tap the “Basic” button [d.].

Tap “Update” [e.] to save your settings and return to the Last Position screen.



GPS Status.

The GPS Status screen is where you can check whether or not your phone can see enough GPS satellites to determine your position. GPS enthusiasts and other interested people can view detailed information about the current GPS position and the GPS satellites.

The Satellite View screen indicates whether or not your GPS receiver has a fix on your current position [a.].

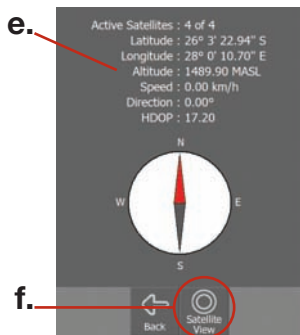
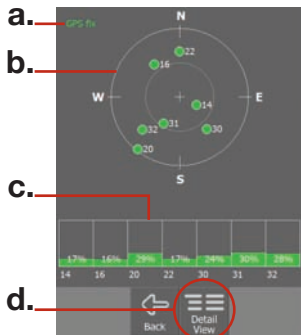
It also shows [b.] all the GPS satellites that your receiver has detected, their numbers and their positions in the sky. A red dot means that the satellite has been detected and a green dot means that it is being used to determine your position.

You can also see the strength of the signal from each satellite [c.].

Tap the “Detail View” button [d.] to view detailed information about your current GPS position, or Back to return to Last Position.

The Detail View screen displays precise details of your current GPS position [e.].

Tap the Satellite View button [f.] to return to the Satellite View screen, or Back to return to Last Position.





See Me.

Before other Pinpoint users can view your position, you must give them permission to see you. You should receive a notification when someone has requested your permission to view your position.

Accepting requests is done on the Manage Friends screen. Get there by tapping the “Friends” button [a.] on the Home screen.

Requests

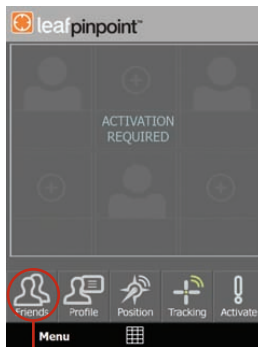
When you have a pending view request from another friend, their name will appear in the list with Pending in the See Me column. To accept or block the request and allow them to see your position, tap your friend’s name [b.] and then the “Accept” [c.] or “Block” [d.] button.

Deleting

To delete a name from the list, tap the name and then the “Delete” button [e.].

NOTE:

By removing a Friend from your list, you will automatically be deleted from their Friend list.



a.



b.

c.

d.

e.

If you upgrade to Leaf Pinpoint™ Mobile, you will already be able to view the positions of a friend with “Accepted” in the “I see” column.



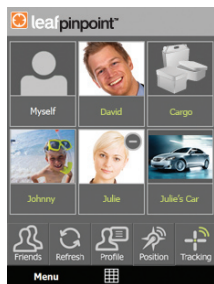
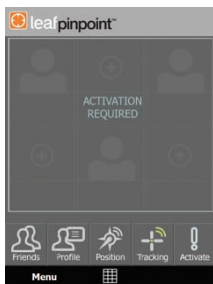
Upgrading.



Leaf Pinpoint™ Tracker can easily be upgraded to a full copy of Leaf Pinpoint™ Mobile that enables you to view the positions of others.

To do this you will need to purchase a license for Leaf Pinpoint™ Mobile and you will receive a Software Activation Key that will unlock the full functionality.

Contact Leaf on +27 11 460 8599 or click to www.leafpinpoint.net for more details.



Power Saving Tips.



All GPS products currently use a lot of power. If you are concerned about your phone's battery life while using Leaf Pinpoint™ Mobile, please read the following advice.

- Because determining your GPS position uses more power while you are moving and updates are sent to the server more frequently, please consider using a car charger if you are in a motor vehicle.
- If you have a slim-line phone, consider a long life battery for times when you want to transmit your position while on the move and external power is not available.
- If you are on the move, your battery is low and real-time reporting is not crucial, you can switch to off-line mode and update later, or as a last resort, consider switching tracking off temporarily.

TERMS AND CONDITIONS OF USE: LEAF PINPOINT (abridged version, full version on enclosed CD). **Latest version can be viewed at www.leafpinpoint.net or obtained from Leaf directly. Usage of the products shall constitute your acceptance of these terms, including the limitations on use, liability and warranty.** "Territory" means any Territory the product is being used in.

1. LICENSE By using the Product(s) you are entering into a limited non-exclusive license agreement to use the Product on the terms and conditions (referred to above). Continued usage shall constitute acceptance to be bound to such terms and conditions as amended from time to time. **If you do not agree, or wish to be bound by the terms and conditions, IMMEDIATELY DISCONTINUE USE.** This License does not grant any rights to obtain future upgrades, updates or supplements of the Software. Pinpoint mobile is a single user license that allows you to view the position of up to 6 other users (one at a time, activation on 1 mobile device only). Pinpoint Desktop allows the licensee to view the position of up to 2 assets and/or other users ("Pinpoint Friends") simultaneously. Viewing of each additional asset will require an additional license and license fee.

2. USE OF PRODUCT The User may only use the Software for personal use, internal business use, and not for resale and/or commercial purposes, not to sub-license, assign, transfer or otherwise convey the Software to any third party. The User acknowledges and agrees that he will incur a cost to download information and/or data in the course of using the Product, in accordance with the prevailing rates of his particular Mobile Service Provider to download data and agrees that the Product will only function when installed on a device with built-in GPS capability and that a separate device may need to be acquired by either the User wishing to view the position of another User (tracking User) and/or the User whose position is being viewed (tracked User) such as a Geo-Pin and/or bluetooth receiver device. When using the Product to view another User's position in a different territory the User acknowledges that he may have to activate roaming services with his Cellular Service Provider at an additional cost as determined by its Cellular Service Provider and/or that the Product shall not function if such services are not available in that particular territory (and similar for a "tracking User" in a different Territory. When using Pinpoint Desktop, the User shall fully insure the asset being viewed and this application should not be seen as a replacement for insurance in any way.

3. LIMITATION OF LIABILITY Use of the product is entirely at the User's own risk. The User assumes all risk for loss or damage to the monitored asset and/or contents and/or components and for personal injury to persons occupying or affected by his/her monitored asset. Leaf shall use its best endeavours to ensure the accuracy of the material, maps and information that constitutes the products, (of which some are sourced from third party suppliers) however it is provided on an "as is" basis and all warranties, guarantees and/or conditions and other terms implied by statute or common law are, to the fullest extent permitted by law, excluded. Third party material, official copyright notices and specific license conditions may be found via <http://www.leafpinpoint.net>. Without limiting the foregoing, Leaf makes no warranty that the Products will (a) meet the User's requirements, (b) be uninterrupted, timely, secure, virus-free or error-free; or will be compatible with other software or applications to be used with or applied to, (c) provide results that will be effective, accurate or reliable, (d) provide results and be of a quality that meets the User's expectations and (e) not have any errors in any software obtained from or used through the Products, or any defects in the services and Products will be corrected, or (f) provide information that is accurate. Leaf makes no warranty of fitness for a particular purpose, merchantability and non-infringements. Leaf shall not be liable for the activation, interruption, operation or non-operation of the Products, the cellular network, the Global Positioning Satellite (GPS); telephone transmission wires, the Device or other potential mediums since Leaf has no control of, or supervision over, any such equipment. In no event will Leaf, its suppliers, employees, contractors, affiliated companies and/or affiliated third parties mentioned on Leaf's website from time to time be liable for any loss, injury, death or damages of any kind, including without limitation, direct, indirect, incidental, punitive or consequential damages (including, but not limited to, damages for lost profits, incidental, special or consequential damages, business interruption and loss of programmes or information) claims and/or actions arising out of or in connection with the Products and/or use of the Products, performance or use of the software with other software any subsequent modifications, updates or enhancements to the Products including its maps, regardless of whether or not the negligence of Leaf caused or contributed to the said loss, injury, death or damages. The User of the products and particularly the Pinpoint Mobile Product hereby indemnifies Leaf and holds it harmless against any claim by a third party in respect of invasion of privacy or any other claim of whatsoever nature and howsoever arising from the use of the products, including consequential damages. Leaf hereby makes the User aware, that Privacy laws applicable in the Republic of South Africa and Foreign Territories should be observed when using the Product. The User in particular indemnifies Leaf for damages and claims arising from the User obtaining another User's (tracked User) secret username and Password and/or Pass Code in an unlawful and/or fraudulent and/or manner other than with the explicit consent of the tracked User and/or the User not keeping his username and password and/or passcode secret and confidential. This clause shall survive the termination or expiration of this agreement for any reason whatsoever.

4. PRIVACY Every individual and entity's (tracked User) right to privacy is of paramount importance to Leaf. Any information provided by the User to Leaf and saved on Leaf's database will not be shared with any third party, unless Leaf obtains the User's prior permission to do so or is required to do so by law. All location information shall be kept on our database for a minimum period of one month, and a maximum period of 12 months, whereafter it shall be permanently deleted. Leaf shall however be under no obligation to keep such data, nor shall it take any responsibility or be liable for any damages caused of whatever nature and howsoever arising by it not keeping such information for the aforementioned period. During this period, this information shall not be disclosed to any third party unless Leaf is required by law to do so. Any request by a User to disclose this information shall be granted on a case by case basis at Leaf's sole discretion and may incur a fee to cover any administration fees. View Leaf's full Privacy Policy at www.leafpinpoint.net or obtain same directly from Leaf. These terms and conditions will be governed by and construed in accordance with the laws in force in the Republic of South Africa.